

HOT DRINKS

Cafe Americano			Mocha	£3.75
	Regular	Large	Simply sensational blend of espresso, chocolate and steamed milk	
Black	£2.75	£3.15		
Milk	£2.95	£3.35		
Cream	£3.25	£3.50		
Cafetiere (per person)			Tea Pot For One	£2.75
Freshly and finely ground roasted coffee beans, to give a full bodied flavour			Also available as decaffeinated	
Black			Specialty Tea (per person)	£2.75
Milk			Earl Grey, Assam or Red Bush	
Cream			Infusions (per cup)	£2.95
			Dragonwell Green, Citrus Chamomile, Egyptian Mint or Wild Encounter	
Espresso			Hot Chocolate	£3.50
	Single	Double	Rich, creamy Italian hot chocolate	
	£2.95	£3.50		
Flat White			Snow Capped Hot Chocolate	£3.75
Double espresso with dense foamed milk			Topped with lashings of whipped cream and a dusting of cocoa	
Cappuccino			Volcano Hot Chocolate	£4.50
Espresso and steamed milk topped with foamed milk and a dusting of cocoa			Filled with fluffy marshmallows finished off with whipped cream and a dusting of cocoa	
	Regular	Large		
	£3.00	£3.35		
Cafe Latte			Extra Flavour Shot	£1.00
Espresso with lashings of steamed milk			Vanilla, caramel or hazelnut syrup	
Milk Alternatives			Extra Espresso Shot	£1.00
Extra Milk			Extra shot of espresso to your drink	
		£0.40		
		£0.50		

COLD DRINKS

Fruit Juice		£3.25	Mineral Water	£2.25
Cranberry, apple or orange			Still or sparkling	
Iced Semi-Skimmed Milk		£1.60	Sparkling Lemon and Lime	£2.50
			A refreshing flavoured mineral water	
Iced Milkshakes			Sparkling Elderflower Presse	£3.95
Chocolate, banana, strawberry or vanilla flavouring topped with ice cream			A refreshing flavoured mineral water	
	Regular	Large		
	£4.25	£5.50		
Iced Coffee		£3.75	Fizzy Drinks	
Single espresso, milk, ice cubes and vanilla ice cream			Fanta, Lemonade, Coke or Diet Coke	
			Regular	Large
			£3.00	£3.50

WINE & BEER

House White		House Red		House Rose	
An elegant white wine with vibrant tropical fruit aromas and a harmonious balance of flavours		Ruby colour with notes of red and black berries, this is juicy, medium bodied, soft and smooth		Soft strawberry and violet aromas, velvety palate with a hint of redcurrant on the finish	
125ml	£4.50	125ml	£5.00	125ml	£4.50
175ml	£6.00	175ml	£6.00	175ml	£6.00
Bottle	£25.00	Bottle	£25.95	Bottle	£25.00

San Miguel Lager (300ml bottle) £5.00
A crisp and refreshing San Miguel

THE PLACE TO EAT
RESTAURANT |@| GLASSWELLS

ALSO AT GLASSWELLS



MEETING ROOMS

Our private meeting rooms are available to hire for up to 14 people in Ipswich and 12 people in Bury, with free wifi, parking and air conditioning. Refreshments and catering can be provided by our Place to Eat Restaurant. Delegate rates start at £14.50 per person, which includes half day room, a flip chart and pens, projector and screen, tea and coffee on arrival and mid-morning. Room only hire starts at £50.

glasswells.co.uk/meeting-rooms
Bury 01284 770941 | Ipswich 01473 253164



HOME REMOVALS

Glasswells have been offering a tailor-made service, relocating families and corporate clientele locally, nationally and even worldwide for 75 years. We are a proud member of the British Association of Removers.

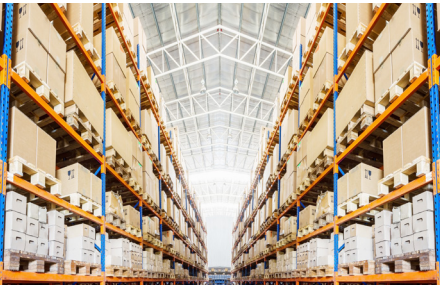
01284 754294 | glasswellsremovals.co.uk



COMMERCIAL FLOORING

Our dedicated and experienced team offer a bespoke service, planning, supplying and installing flooring and carpets to businesses across the region.

01284 770910 | glasswellscontracts.co.uk



STORAGE & DISTRIBUTION

From low-cost, easy access document archiving, to pallet storage and tailored distribution solutions, Glasswells is on hand to solve your storage needs.

01284 748762 | glasswellsstorage.co.uk

FOR GENERAL ENQUIRIES
Bury 01284 752804 | Ipswich 01473 253164

Leave us a review ★★★★★

Google



THE PLACE TO EAT
RESTAURANT |@| GLASSWELLS

BAKERY

SERVED ALL DAY			
Cheese Scone Served with butter Gluten free scone available or With cream cheese and onion relish	£3.55 £4.55	Carrot Cake Topped and filled with cream cheese icing	£3.75
Caramel Shortbread	£3.50		
Cherry & Coconut Slice	£4.25		
Chocolate Fridge Cake	£3.75		
Coffee & Walnut Cake	£3.75	Apricot Slice	£3.75
Lemon Drizzle Cake	£3.75	Date Slice	£3.75
Chocolate Brownie	£3.75	Banana Loaf	£3.75
		Buttery Shortbread Biscuit	£1.50

BRUNCH

SERVED ALL DAY			
Toast Served with strawberry jam and butter	£2.25	Bacon Bap A fresh toasted white bap filled with bacon and sliced mushrooms	£6.50
Toasted Teacake Served with butter and strawberry jam	£2.95	Sausage Bap A fresh toasted white bap filled with sausages and sliced mushrooms	£6.50
Additional Preserves	£1.25	Vegan Sausage Bap	£6.50
Warm Sausage Roll	£4.50	Extra Butter	£0.10

AFTERNOON TEA

£17.50 Per Person
A sandwich with your choice of filling from our menu, warm scone with clotted cream and preserves, a variety of home-made cakes and your choice of tea (supplement applies for speciality teas and infusions)

◆ GIFT VOUCHERS AVAILABLE ◆

MAINS

SERVED 12:00PM - 2:30PM			
Soup of the Day Served with a wedge of delicious cob	£6.75	The Glasswells Ploughman's Mini sausage roll, Suffolk ham, cheddar wedge, home-made piccalilli, baby gherkins, cherry tomatoes, dressed baby leaf and a wedge of cob	£12.95
Glasswells Vegetable Chilli	£7.40	Quiche of the Day	£11.50
Smoked Mackerel Pâté Our smoked mackerel pâté delivers an abundance of flavour and is served with locally baked granary toast	£8.25		

SALADS

SERVED 12:00PM - 2:30PM			
Chicken Caesar Salad Succulent chicken breast on a bed of Romaine lettuce and cherry tomato halves tossed in a Caesar dressing, served with Parmesan shavings, crispy bacon bits and croutons	£12.75	Glasswells Classic Salad Mixed leaves, cherry tomatoes, cucumber, peppers, cooked beetroot, boiled egg and your choice of Suffolk Ham, cheese or chicken	£12.75
Greek Salad	£12.95		

SANDWICHES

SERVED ALL DAY			
All sandwiches are available on white or granary bread, served with a salad garnish of dressed baby leaves, sunflower seeds and crisps. Gluten free option and vegan spread available on request			
Prawn Marie Rose sauce and salad leaves	£10.00	BLT Bacon, lettuce, tomato and mayo	£7.75
Egg Mayonnaise Free range egg, mayo and cress	£7.60	Coronation Chicken In a mild curry mayo with sultanas and mango chutney	£8.75
Cheddar or Vegan Cheese With pickle or tomato	£7.60	Ham & Mustard Home-cooked Suffolk ham with English mustard	£8.75
Tuna Mayonnaise With cucumber	£7.75		

PANINIS & TOASTIES

SERVED ALL DAY			
Served with a salad garnish of dressed baby leaves, sunflower seeds and crisps			
PANINI/TOASTED SANDWICH	£9.95	Bacon, Brie & Cranberry	
BOTH AVAILABLE WITH THE FOLLOWING FILLINGS		Cheddar or Vegan Cheese & Tomato	
		Tuna Melt	
		Cheese & Ham	

JACKET POTATOES

SERVED FROM 12PM			
Oven baked and served with a salad garnish of baby leaves and sunflower seeds			
Plain with Butter	£5.75	Chilli Beef	£9.25
Cheddar or Vegan Cheese	£8.25	Suffolk Ham	£8.75
Baked Beans	£7.50	Coronation Chicken	£10.50
Tuna Mayonnaise	£9.25	Prawns in Marie Rose Sauce	£11.00

SIDES

Garlic Focaccia Bread	£2.75	Egg Mayonnaise	£2.25
New Potatoes	£1.75	Tuna Mayonnaise	£2.75
Homemade Coleslaw	£2.25	Suffolk Ham	£3.25
Mature Cheddar	£2.75	Chicken Breast Pieces	£3.75
Vegan Cheese	£2.75	Atlantic Prawns	£5.50
Side Salad Mixed leaves, cherry tomatoes, cucumber, red onion, red pepper and sunflower seeds	£3.50	Baked Beans	£2.25
		Extra Condiments	£0.20

DESSERTS

SERVED 12:00PM - 2:30PM			
Syrup or Jam Sponge Pudding With cream, custard or ice cream This dessert is dairy and gluten free	£6.25	Kelly's Ice Cream A choice of vanilla, chocolate or strawberry. Vegan option available	£6.50
Dessert of the Day See the Specials Board	£6.25	Refreshing Fruit Sorbets	£6.50
Cheesecake Cheesecake of the day served with cream or ice cream	£6.25	Pouring Cream	£1.00
		Custard	£1.30

CHILDREN'S MENU

MINI SANDWICH MEAL		SERVED ALL DAY	
Choose your sandwich, snack and drink, served with crisps		£6.50	
Bread White or granary		Snack Vegetables, sliced apple, banana or shortbread	
Filling Chicken breast, cheese, ham or jam		Drink Milk, squash or bambinocinno	

CHILDREN'S DRINKS

Iced Semi-Skimmed Milk	£1.35	Hot Chocolate	£2.95
Squash Available in orange or apple & blackcurrant	£1.35	Snow Capped Hot Chocolate Topped with lashings of whipped cream and a dusting of cocoa	£3.25
Bambinocinno An espresso cup of warm frothed milk served with a dusting of chocolate	£1.35	Volcano Hot Chocolate Filled with fluffy white marshmallows finished off with whipped cream and a dusting of cocoa	£3.50


TAKE-AWAY


Call us with your order and collection time and we will have it ready for when you arrive.


Bury St Edmunds 01284 770941 **Ipswich** 01473 253164

ALLERGIES & INTOLERANCES


We endeavour to cater to all dietary requirements and wherever possible we will make substitutions, so **ask one of our friendly team** if we can adapt the ingredients of a dish.

**VEGETARIAN**

**VEGAN**

**DAIRY FREE**

**GLUTEN FREE**

**CONTAINS NUTS**

SEE THE SPECIALS BOARD FOR MORE OPTIONS