

HOT DRINKS

Cafe Americano			Mocha	£3.75		
	Regular	Large	Simply sensational blend of espresso, chocolate and steamed milk			
Black	£2.75	£3.15				
Milk	£2.95	£3.35				
Cream	£3.25	£3.50	Tea Pot For One		£2.75	
Cafetiere (per person)			Also available as decaffeinated			
Freshly and finely ground roasted coffee beans, to give a full bodied flavour			Specialty Tea (per person)			£2.75
			Earl Grey, Assam or Red Bush			
Black		£3.25	Infusions (per cup)			£2.95
Milk		£3.45				
Cream		£3.75				
Espresso			Dragonwell Green, Citrus Chamomile, Egyptian Mint or Wild Encounter			
	Single	Double	Hot Chocolate			£3.50
	£2.95	£3.50	Rich, creamy Italian hot chocolate			
Flat White			Snow Capped Hot Chocolate			£3.75
Double espresso with dense foamed milk			Topped with lashings of whipped cream and a dusting of cocoa			
Cappuccino			Volcano Hot Chocolate			£4.50
Espresso and steamed milk topped with foamed milk and a dusting of cocoa			Filled with fluffy marshmallows finished off with whipped cream and a dusting of cocoa			
	Regular	Large	Extra Flavour Shot			£1.00
	£3.00	£3.35				
Cafe Latte						£3.35
Espresso with lashings of steamed milk			Extra Espresso Shot			£1.00
Milk Alternatives			Extra shot of espresso to your drink			
Extra Milk			Extra Tea Bag			£0.50

COLD DRINKS

<b>Fruit Juice</b>	<b>£3.25</b>	<b>Mineral Water</b>	<b>£2.75</b>
Cranberry, apple or orange		Still or sparkling	
<b>Iced Semi-Skimmed Milk</b>	<b>£1.60</b>	<b>Sparkling Lemon and Lime</b>	<b>£2.50</b>
		A refreshing flavoured mineral water	
<b>Iced Milkshakes</b>		<b>Sparkling Elderflower Presse</b>	<b>£3.95</b>
Chocolate, banana, strawberry or vanilla flavouring topped with ice cream		A refreshing flavoured mineral water	
	<b>Regular</b>	<b>Large</b>	
	<b>£4.25</b>	<b>£5.50</b>	
		<b>Fizzy Drinks</b>	
		Fanta, Lemonade, Coke or Diet Coke	
<b>Iced Coffee</b>	<b>£3.75</b>		
		<b>Regular</b>	<b>Large</b>
Single espresso, milk, ice cubes and vanilla ice cream		<b>£3.00</b>	<b>£3.50</b>

WINE & BEER

House White		House Red		House Rose	
An elegant white wine with vibrant tropical fruit aromas and a harmonious balance of flavours		Ruby colour with notes of red and black berries, this is juicy, medium bodied, soft and smooth		Soft strawberry and violet aromas, velvety palate with a hint of redcurrant on the finish	
125ml	£4.75	125ml	£5.25	125ml	£4.75
175ml	£6.25	175ml	£6.75	175ml	£6.25
Bottle	£25.50	Bottle	£30.00	Bottle	£25.50

San Miguel Lager (300ml bottle) £5.25  
A crisp and refreshing San Miguel

THE PLACE TO EAT  
RESTAURANT | @ | GLASSWELLS

ALSO AT GLASSWELLS



MEETING ROOMS

Our private meeting rooms are available to hire for up to 14 people in Ipswich and 12 people in Bury, with free wifi, parking and air conditioning. Refreshments and catering can be provided by our Place to Eat Restaurant. Delegate rates start at £14.50 per person, which includes half day room, a flip chart and pens, projector and screen, tea and coffee on arrival and mid-morning. Room only hire starts at £50.

glasswells.co.uk/meeting-rooms  
Bury 01284 770941 | Ipswich 01473 253164



HOME REMOVALS

Glasswells have been offering a tailor-made service, relocating families and corporate clientele locally, nationally and even worldwide for 75 years. We are a proud member of the British Association of Removers.

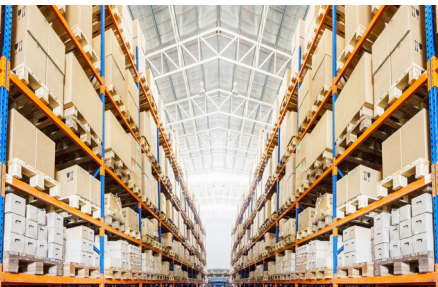
01284 754294 | glasswellsremovals.co.uk



COMMERCIAL FLOORING

Our dedicated and experienced team offer a bespoke service, planning, supplying and installing flooring and carpets to businesses across the region.

01284 770910 | glasswellscontracts.co.uk



STORAGE & DISTRIBUTION

From low-cost, easy access document archiving, to pallet storage and tailored distribution solutions, Glasswells is on hand to solve your storage needs.

01284 748762 | glasswellsstorage.co.uk

FOR GENERAL ENQUIRIES

Bury 01284 752804 | Ipswich 01473 253164



THE PLACE TO EAT  
RESTAURANT | @ | GLASSWELLS



BAKERY

SERVED ALL DAY			
Cheese Scone	£3.75	Carrot Cake	£3.75
Served with butter Gluten free scone available		Topped and filled with cream cheese icing	
or		Caramel Shortbread	£3.75
With cream cheese and onion relish		Buttery shortbread base topped with caramel and milk chocolate	
£4.75			
Fruit Scone	£3.75	Cherry & Coconut Slice	£4.50
Served with butter and strawberry jam		Milk chocolate base topped with cherries and coconut	
or			
With clotted cream and jam			
£4.75			
Victoria Sponge Cake	£3.50	Chocolate Fridge Cake	£4.25
A light plain sponge filled with butter icing and strawberry jam		Chocolate biscuit and sultana slice with a milk chocolate topping	
Coffee & Walnut Cake	£3.75	Apricot Slice	£3.75
Coffee sponge with chopped walnuts and coffee butter icing		An oat slice with an apricot centre	
Date Slice	£3.75		
An oat slice filled with a date centre			
Banana Loaf	£3.75		
Moist with a soft crumb			
Buttery Shortbread Biscuit	£1.50		

BRUNCH

SERVED ALL DAY			
Toast	£2.25	Bacon Bap	£6.75
Served with strawberry jam and butter		A fresh toasted white bap filled with bacon and sliced mushrooms	
Toasted Teacake	£2.95	Sausage Bap	£6.75
Served with butter and strawberry jam		A fresh toasted white bap filled with sausages and sliced mushrooms	
Additional Preserves	£1.25		
Warm Sausage Roll	£5.00	Vegan Sausage Bap	£6.75
		A fresh toasted white bap filled with vegan sausages and sliced mushrooms	
Salmon Muffin	£10.00		
Toasted English muffin topped with scrambled egg and smoked salmon			
Extra Butter	£0.15		

AFTERNOON TEA

SERVED FROM 2:30PM

£17.50 Per Person

A sandwich with your choice of filling from our menu, warm scone with clotted cream and preserves, a variety of home-made cakes and your choice of tea (supplement applies for speciality teas and infusions)

◆ GIFT VOUCHERS AVAILABLE ◆

MAINS

SERVED 12PM - 2:30PM			
Soup of the Day	£6.75	The Glasswells Ploughman's	£12.95
Served with a mini tin loaf		Mini sausage roll, Suffolk ham, cheddar wedge, home-made piccalilli, baby gherkins, cherry tomatoes, dressed baby leaf and a mini tin loaf	
Glasswells Vegetable Chilli	£7.40		
For a lighter bite, packed with vegetables and kidney beans, served on tortilla chips			
Smoked Mackerel Pâté	£8.25	Quiche of the Day	£12.00
Our smoked mackerel pâté delivers an abundance of flavour and is served with malted bloomer toast		Served with new potatoes, home-made coleslaw and a salad garnish of dressed baby leaves	

SALADS

SERVED 12PM - 2:30PM			
Chicken Caesar Salad	£13.50	Glasswells Classic Salad	£13.50
Succulent chicken breast on a bed of Romaine lettuce and cherry tomato halves tossed in a Caesar dressing, served with Parmesan shavings, crispy bacon bits and croutons		Mixed leaves, cherry tomatoes, cucumber, peppers, cooked beetroot, boiled egg and your choice of Suffolk Ham, cheese or chicken	

SANDWICHES

All sandwiches are available on white or malted bloomer, served with a salad garnish of dressed baby leaves and crisps. Gluten free option and vegan spread available on request, please speak to a member of staff

SERVED ALL DAY			
Prawn	£10.00	BLT	£7.75
Marie Rose sauce and salad leaves		Bacon, lettuce, tomato and mayo	
Egg Mayonnaise	£7.60	Coronation Chicken	£8.75
Free range egg, mayo and cress		In a mild curry mayo with sultanas and mango chutney	
Cheddar or Vegan Cheese	£7.60	Ham & Mustard	£8.75
With pickle or tomato		Home-cooked Suffolk ham with English mustard	
Tuna Mayonnaise	£7.75		
With cucumber			

PANINIS & TOASTIES

Served with a salad garnish of dressed baby leaves and crisps

SERVED ALL DAY			
PANINI/TOASTED SANDWICH	£9.95	Bacon, Brie & Cranberry	
BOTH AVAILABLE WITH THE FOLLOWING FILLINGS		Cheddar or Vegan Cheese & Tomato	
		Tuna Melt	
		Cheese & Ham	

JACKET POTATOES

Oven baked and served with a salad garnish of baby leaves

SERVED FROM 12PM			
Plain with Butter	£5.75	Chilli Beef	£9.25
Cheddar or Vegan Cheese	£8.25	Suffolk Ham	£8.75
Baked Beans	£7.50	Coronation Chicken	£10.50
Tuna Mayonnaise	£9.25	Prawns in Marie Rose Sauce	£11.00

SIDES

SERVED 12PM - 2:30PM			
Garlic Focaccia Bread	£2.75	Egg Mayonnaise	£2.25
New Potatoes	£1.75	Tuna Mayonnaise	£4.00
Homemade Coleslaw	£2.25	Suffolk Ham	£4.00
Mature Cheddar	£2.75	Chicken Breast Pieces	£3.75
Vegan Cheese	£2.75	Atlantic Prawns	£5.50
Side Salad	£3.50	Baked Beans	£2.25
Mixed leaves, cherry tomatoes, cucumber, red onion and red pepper			
		Extra Condiments	£0.40

DESSERTS

SERVED 12PM - 2:30PM			
Syrup or Jam Sponge Pudding	£6.50	Kelly's Ice Cream	£6.50
With cream, custard or ice cream This dessert is dairy and gluten free		A choice of vanilla, chocolate or strawberry. Vegan option available	
Dessert of the Day	£6.50	Refreshing Fruit Sorbets	£6.50
See the Specials Board		A choice of raspberry or lemon	
Cheesecake	£6.50	Pouring Cream	£1.00
Cheesecake of the day served with cream or ice cream			
		Custard	£1.30

CHILDREN'S MENU

MINI SANDWICH MEAL		SERVED ALL DAY	
Choose your sandwich, snack and drink, served with crisps		£7.00	
Bread		Snack	
White or malted bloomer		Vegetables, sliced apple, banana or shortbread	
Filling		Drink	
Chicken breast, cheese, ham or jam		Milk, squash or bambinocinno	

CHILDREN'S DRINKS

Iced Semi-Skimmed Milk	£1.35	Hot Chocolate	£2.95
Squash	£1.35	Snow Capped Hot Chocolate	£3.25
Available in orange or apple & blackcurrant		Topped with lashings of whipped cream and a dusting of cocoa	
Bambinocinno	£1.35	Volcano Hot Chocolate	£3.50
An espresso cup of warm frothed milk served with a dusting of chocolate		Filled with fluffy white marshmallows finished off with whipped cream and a dusting of cocoa	

TAKE-AWAY

Call us with your order and collection time and we will have it ready for when you arrive.

Bury St Edmunds 01284 770941	Ipswich 01473 253164
------------------------------	----------------------

ALLERGIES & INTOLERANCES

We endeavour to cater to all dietary requirements and wherever possible we will make substitutions, so ask one of our friendly team if we can adapt the ingredients of a dish.

VEGETARIAN	VEGAN	DAIRY FREE
GLUTEN FREE	CONTAINS NUTS	

SEE THE SPECIALS BOARD FOR MORE OPTIONS